



# **CERTIFICATION AND FINANCING PROPOSAL**

## **EQUIPMENT FOR SANITARY LANDFILL OPERATIONS NUEVO CASAS GRANDES, CHIHUAHUA**

*Submitted: May 20, 2016*

**CERTIFICATION AND FINANCING PROPOSAL**  
**EQUIPMENT FOR SANITARY LANDFILL OPERATIONS**  
**NUEVO CASAS GRANDES, CHIHUAHUA**

**CONTENTS**

<b>EXECUTIVE SUMMARY</b> .....	2
<b>1. ELIGIBILITY</b> .....	4
<b>2. CERTIFICATION CRITERIA</b>	
2.1 Technical Criteria	
2.1.1. Project Description .....	4
2.1.2. Technical Feasibility .....	9
2.1.3. Land Acquisition and Right-of-way Requirements .....	10
2.1.4. Management and Operations .....	11
2.2 Environmental Criteria	
2.2.1. Compliance with Applicable Environmental Laws and Regulations .....	12
2.2.2. Environmental Effects/Impacts .....	13
2.3 Financial Criteria	
2.3.1. Uses and Sources of Funds .....	15
2.3.2. Program Criteria Compliance .....	16
2.3.3. Conclusion .....	16
<b>3. ACCESS TO PUBLIC INFORMATION</b>	
3.1 Public Consultation .....	17
3.2 Outreach Activities .....	17

## EXECUTIVE SUMMARY

### EQUIPMENT FOR SANITARY LANDFILL OPERATIONS NUEVO CASAS GRANDES, CHIHUAHUA

- Project:** The proposed project consists of the acquisition of equipment for sanitary landfill operations in Nuevo Casas Grandes, Chihuahua, Mexico (the “Project”). The Project complements a sanitary landfill construction project, which is scheduled to be complete In June 2016 and is not included in the scope of this certification.
- Project Objective:** The purpose of the Project is to is to achieve proper solid waste management in Nuevo Casas Grandes by providing the equipment necessary to adequately operate the new sanitary landfill, thereby allowing the community to comply with the applicable laws and regulations and helping reduce improper solid waste disposal and related risks for soil and groundwater contamination, as well as vector-related diseases and other harmful effects.
- Expected Project Outcomes:** The Project is expected to generate environmental and human health benefits related to the following Project outcomes:
- a) Improved landfill operations for the disposal of up to 55 metric tons of solid waste per day;
  - b) Full compliance with applicable laws and regulations; and
  - c) Improved solid waste management system for approximately 16,500 households.
- Population Benefitted:** 59,337 residents of Nuevo Casas Grandes, Chihuahua.<sup>1</sup>
- Project Sponsor:** Municipality of Nuevo Casas Grandes, Chihuahua.
- Project Cost:** \$8,000,000 pesos (US\$500,000).<sup>2</sup>
- NADB Grant:** US\$500,000 from NADB’s Community Assistance Program (PAC).<sup>3</sup>

---

<sup>1</sup> Source: Mexican national statistical institute, INEGI, Mexican Census, 2010.

<sup>2</sup> Unless otherwise noted, all U.S. dollar figures are quoted at an exchange rate of \$16.00 pesos to the dollar.

BOARD DOCUMENT BD 2016-13  
 CERTIFICATION AND FINANCING PROPOSAL  
 CAP GRANT, NUEVO CASAS GRANDES, CHIHUAHUA

**Uses and Sources of Funds:**

Uses	Amount (US \$)	Amount (MX pesos)	%
Equipment*	\$500,000	\$8,000,000	100.0
<b>TOTAL</b>	<b>\$500,000</b>	<b>\$8,000,000</b>	<b>100.0</b>
Sources	Amount (US\$)	Amount (MX pesos)	%
NADB CAP Grant	\$500,000	\$8,000,000	100.0
<b>TOTAL</b>	<b>\$500,000</b>	<b>\$8,000,000</b>	<b>100.0</b>

\* Includes a service agreement and value-added tax (VAT).

---

<sup>3</sup> As noted above, the Project complements a landfill construction project funded jointly by the Municipality and the Mexican federal government. The Mexican Ministry of Environment and Natural Resources (SEMARNAT) invested \$4,676,089.72 pesos (US\$292,255) in the landfill according to official letter No. DGFAUT/612/000520 dated May 13, 2015, while the Municipality invested more than \$1 million pesos (US\$62,500), which meets the minimum sponsor contribution required under CAP grant program.

**CERTIFICATION AND FINANCING PROPOSAL**  
**EQUIPMENT FOR SANITARY LANDFILL OPERATIONS**  
**NUEVO CASAS GRANDES, CHIHUAHUA**

---

**1. ELIGIBILITY**

---

**Project Type**

The Project falls within the eligible sector of solid waste.

**Project Location**

The Project is located in Nuevo Casas Grandes in the state of Chihuahua, approximately 106 km (65 miles) south of the U.S.-Mexico border.

**Project Sponsor and Legal Authority**

The Project sponsor is the Municipality of Nuevo Casas Grandes, Chihuahua (the “Sponsor” or the “Municipality”), through its Department of Public Services. The Sponsor is responsible for solid waste management and has the legal authority to acquire, own and operate landfill equipment.

---

**2. CERTIFICATION CRITERIA**

---

**2.1. TECHNICAL CRITERIA**

**2.1.1. Project Description**

**Geographic Location**

The municipality of Nuevo Casas Grandes is located in the northwestern part of the state of Chihuahua, approximately 124 miles southwest of El Paso, Texas and 120 miles southeast of Douglas, Arizona. The sanitary landfill is located about 8.5 km (5.3 miles) northeast of the city. Figure 1 shows the approximate location of the Project.

Figure 1  
PROJECT VICINITY MAP



**General Community Profile**

According to the 2010 Mexican census, the municipality of Nuevo Casas Grandes has a population of 59,337 residents, which represents 1.7% of the state’s population, and contributes 0.85% to Chihuahua’s gross domestic product (GDP). Based on the 2009 Mexican economic census, manufacturing constitutes the most important commercial sector, representing 48% of the local GDP, followed by commerce with 31% of the local GDP. The service industry is the third largest contributor to the sector, providing 5% of the total GDP for the municipality.

Table 1 shows the status of basic public services and infrastructure in Nuevo Casas Grandes.

**Table 1**  
**BASIC PUBLIC SERVICES AND INFRASTRUCTURE**

Water System	
Coverage	95%
Supply source	12 water wells (Casas Grandes Aquifer)
Number of hookups	15,979
Wastewater Collection	
Coverage	70%
Number of connections:	11,824
Wastewater Treatment	
Coverage	100% of collected flows
Treatment facilities	Extended aeration, 280 liters per second (6.4 million gallons a day)
Solid Waste	
Collection coverage	100%
Final disposal	Controlled dumpsite
Street Paving	
Coverage	30%

Source: State water agency, JCAS, May 2012.

**Solid Waste Management Profile**

The Sponsor currently provides waste collection services to more than 59,337 residents (100% coverage) through the Department of Public Services (the “Department”). For collection services, the Municipality has 14 trucks in good operating condition. Trash is collected along 12 residential routes twice a week, with the exception of rural routes which are collected once a week. There is one commercial route with one truck that also provides service to the municipal parks. Commercial establishments that generate more than two bins (110 gallons) of trash per day are required to pay \$65.00 pesos for collection services. The remaining truck is used to collect rubbish or other waste that is reported to the Department as being in the public right-of-way.

The 2013-2016 Municipal Development Plan includes goals for improving solid waste collection services by performing a route analysis and modernizing or optimizing operations, including a vehicle maintenance program and community education campaigns, among other activities.

Currently, the solid waste collected is disposed of in a controlled dumpsite. However, to improve waste management and comply with Mexican federal standard NOM-083 SEMARNAT-2003, the Sponsor is completing the construction of a new sanitary landfill with federal funding through the Mexican Ministry of Environment and Natural Resources (SEMARNAT), as well as its own funds. The Sponsor is working with the State on the closure of the open dumpsite, which will take place once operations begin in the new landfill.

The new landfill is classified as Type B (50 to 100 tons per day) and is designed to include 10 cells with an overall expected useful life of 24 years, considering the estimated generation of 55 tons of waste/day. The first cell is scheduled to be complete in June 2016 and is 100 meters (328 ft.) wide, 200 meters (656 ft.) long and six meters (19.7 ft.) deep with a 3:1 slope on the sides and a

layer of impermeable geotextile material at the bottom. The landfill also contains a pond for leachates, and a perimeter fence will be constructed around each cell to catch blowing debris and to control entrance to the working front. Construction of the first cell included three bases for biogas wells, which will be extended and managed by the Municipality as waste is accumulated. The new site is located adjacent to the existing dumpsite, on 104 hectares (257 acres), providing sufficient area for future expansion.

The Municipality currently uses a 1986 Caterpillar D7G bulldozer, which has already exceeded its expected useful life, requires constant repairs, and jeopardizes the proper management of solid waste. In addition to replacing this old vehicle, additional equipment is also required to improve soil removal operations, cover waste and reduce dust emissions during compacting activities in compliance with the applicable regulations. Without the proposed equipment, the expected life of the landfill will probably be reduced.

**Project Scope and Design**

The proposed Project consists of the acquisition of new equipment for landfill management and includes the following components:

- C A A A A n. Specifications include an enclosed cabin, low ground pressure (LGP) tracks for added stability and greater surface area for more efficient waste compaction, with an extended blade to facilitate waste dispersion and to protect the machine from waste passing over the top of the blade.
- c c A A A c A A A A A n. Specifications include a hydraulically powered mechanism to scoop the waste and other material, an extendible dipper, and a one-cubic-yard capacity loader bucket with a bolt on the cutting edge.
- \_\_\_\_\_. Specifications include 3.5 or 4 ton capacity to help transport personnel and additional equipment in and around the landfill.
- n A. Specifications include 7 cubic meter (9 cubic yard) capacity to help transport cover material from the stockpile or other locations to the landfill working front.
- A A. Specifications include 8,000-liter (2,100-gallon) capacity to control dust in and around the sanitary landfill, including access roads and cover material.
- A A r n. Additional equipment will include: vehicle scale, 5000-watt portable generator, portable welder, pressure washer, hydro-pneumatic water tank and a set of tools.

Figure 2 provides examples of the type and brand of heavy equipment that may be purchased.



**Figure 2**  
**EXAMPLE OF LANDFILL EQUIPMENT**



A A A A n A A A A A A A A A A n A A A A .

To assure adequate maintenance of the new equipment, the procurement process will also include the purchase of a maintenance service package for a minimum of two years. It is estimated that once the notice of grant approval is received, the procurement process will take approximately three or four months. Table 2 shows the expected Project milestones.

**Table 2**  
**PROJECT MILESTONES**

Key Milestones	Status
Bid process	Anticipated for the third quarter of 2016
Equipment delivery	4 months after notice to proceed
Landfill operations	Initiates upon receipt of the new equipment

The procurement process and purchase agreements will follow NADB Procurement Policies and Procedures.

## **2.1.2. Technical Feasibility**

### **Design Criteria**

The main objective of the proposed Project is to provide the tools necessary to carry out landfill operations in an orderly and efficient manner and in compliance with Mexican standard NOM-083/SEMARNAT-2003. According to that standard, a sanitary landfill should provide for the final confinement of solid waste without harming or endangering the health and safety of the public.

NOM-083 requires that every landfill have an operation manual and a program to monitor and control environmental impacts. It includes basic operation and closure requirements, but does not specify the equipment required for that purpose. The basic operation requirements for a Type B landfill include solid waste confinement and compaction, daily covering of waste and controlling the unintended dispersion of light materials. It also stipulates that the separation of waste should not interfere with landfill activities. The basic landfill closure requirements include the capture of biogas and leachates, which then must be burned or recirculated back into the landfill, respectively. BECC contracted a consultant to recommend the equipment that will allow the Sponsor to operate the landfill in compliance with the requirements.

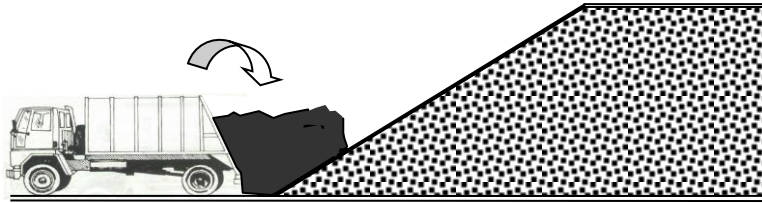
### **Selected Technology**

Recommendations for appropriate equipment were prepared by a sector consultant taking into consideration landfill size, estimated waste volumes received, normal operating hours and local capacity to operate and maintain the equipment. The overall cost of all equipment necessary to operate the landfill in accordance with NOM-083 was also taken into account based on potential funding availability.

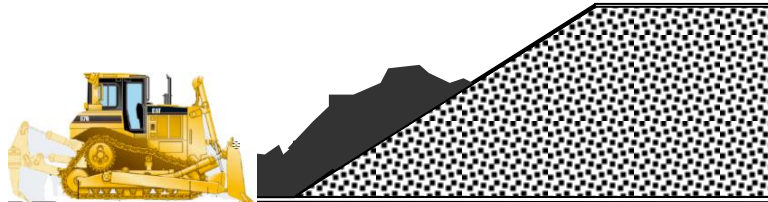
The equipment specifications were selected based on completing the solid waste management tasks required under NOM-083 within an eight-hour shift. These basic activities include: supplying, dispersing and compacting cover material, as illustrated in Figure 3 below. Historically, the Municipality has used a D7 bulldozer to perform these tasks. However, with the new operating method laid out in the manual, the D5 bulldozer is considered large enough to handle the expected waste volumes over the useful life of the equipment (seven years). In addition to the principal waste management activities, the backhoe and dump truck will help supply the cover material needed on a daily basis, as well as support environmental impact control measures and maintenance around the site as required under NOM-083. The water truck will also be used to control environmental impacts, such as dust generated by landfill operations.

**Figure 3**  
**WASTE HANDLING PROCESS IN FOUR SIMPLE STEPS**

**STEP ONE:** Deposit waste at the base of the working front.



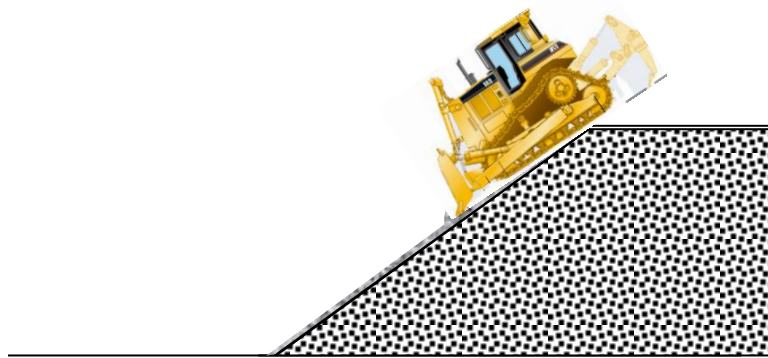
**STEP TWO:** Disperse waste along the face of the inclined working front.



**STEP THREE:** Compact dispersed waste against the face of the inclined work front.



**STEP FOUR:** Place and compact cover material over waste at the end of each day.



### 2.1.3. Land Acquisition and Right-of-way Requirements

No land acquisition or rights-of-way are required for the Project. The Municipality owns the landfill property where the equipment will be used.

#### 2.1.4. Management and Operation

The Municipality has a Department of Public Services, which is responsible for the administration, operation and maintenance of all solid waste management services, including the landfill. The Department is assigned a specific budget by the Municipality, which allows it to carry out its responsibilities. The estimated annual budget for landfill operations is approximately \$3.5 million pesos (US\$218,750). Based on the Municipality's current budget allocation for operation and maintenance activities, those funds should be sufficient to support the estimated costs of the landfill operations.

The Sponsor has operations and maintenance (O&M) manuals that include routine tasks, as well as procedures to address unexpected conditions and ensure the proper operation of the solid waste management system. The equipment purchased as part of the Project will include warranty and maintenance information that will be included in the Sponsor's O&M manual.

In addition to the manuals, a sector consultant provided on-site training in Nuevo Casas Grandes to review the correct method of managing waste in the landfill, as described in the new operational procedures. After reviewing these procedures, the landfill operators had the opportunity to drive and practice maneuvering equipment similar to the equipment they will be using to perform the tasks illustrated in Figure 3.

The Sponsor plans to operate the landfill with seven people who will perform the following duties and responsibilities:

- A          An           (1): This person is responsible for performing technical and administrative tasks inherent to waste management, including overseeing landfill operations, vehicle maintenance and budget management, among other responsibilities.
- r          n          A           (3): These workers are responsible for the working front, must be able to work together as required to perform waste confinement operations in an efficient and orderly manner, must be able to handle the equipment and have the knowledge to comply with solid waste compaction regulations and reporting requirements outlined in NOM-083.
- A          c          A          A           (1 or 2, depending on workload): These workers support the manager and equipment operators and are responsible for collecting and organizing landfill operation and control information, including weighing vehicles and material disposed of in the landfill. These workers will also help organize and direct vehicles along the working front, in order to optimize the dumping of solid waste at the working front and to keep traffic moving smoothly.
- A           (1): This person is required to guard and protect the equipment, buildings and landfill facilities in general.



## 2.2. ENVIRONMENTAL CRITERIA

The condition of the current dumpsite and the lack of equipment for proper solid waste management in Nuevo Casas Grandes could cause groundwater and soil contamination, and creates an environment conducive to harmful fauna and vectors. Implementing the Project will help the Municipality greatly improve its landfill operations and solid waste management, as well as reduce environmental and human health risks related to the accumulation of improperly handled solid waste.

### 2.2.1. Compliance with Applicable Environmental Laws and Regulations

#### Applicable Laws and Regulations

The Project does not require any environmental authorizations, as it consists of the acquisition of equipment. However, it is important to note that the construction of the new landfill by the municipal government is subject to state and federal laws. The equipment acquired through the proposed Project will support the Sponsor's compliance with the following Mexican standards:

- A A A AC A A w n A A          , which establishes the environmental regulatory framework, expands the strategic vision and conveys specific powers and duties to the states and municipalities, so that environmental problems can be addressed directly.
- A A A A w A A n w A AV n A          , which seeks to identify the criteria that should be considered by various levels of government in the generation and comprehensive management of solid waste, in order to prevent and control environmental pollution and ensure the protection of human health.
- A
- N y A A A N N          , which specifies the environmental protection requirements for selecting, designing, constructing, operating, monitoring, and closing final disposal sites and complementary works for municipal solid waste and waste requiring special handling.
- A A A A w A A n w A AV n A A A A          , which establishes provisions for solid waste collection and disposal and the procedures, techniques and technologies approved for proper solid waste management in the state of Chihuahua.
- A A A AC A A w n A A A A          , which specifies the responsibilities of the State for protecting and guaranteeing a healthy environment, as well as provisions for preserving the environment and natural resources, water, wildlife, etc., and for promoting sustainable development.

**Environmental Studies and Compliance Activities**

No environmental studies or compliance activities exist related to the acquisition of vehicles. For the construction of the landfill the Sponsor developed an initial study ( *n A w w* ) to identify environmental impacts related to the landfill construction. The report was reviewed by the Chihuahua State Ministry of the Environment, which confirmed that the landfill is not located in a protected area and issued a resolution in August 2014 authorizing the construction of the facility. The resolution also specifies measures to prevent, control and comply with the environmental aspects of the landfill and requests State validation (certificate of completion), once construction activities have been completed.

The Sponsor will obtain and submit this validation to the NADB before the disbursement of any grant funds.

**Pending Environmental Tasks and Authorizations**

There are no environmental authorizations pending.

**Compliance Documentation**

There is no compliance document required related to the Project.

**2.2.2. Environmental Effects/Impacts**

**Existing Conditions and Project Impact – Environment**

Improperly managed urban solid waste poses a risk to human health and the environment. Uncontrolled dumping and improper waste collection causes a variety of problems, including water pollution, the proliferation of insects and rodents, and increased flooding due to blocked drainage canals or gullies. In addition, it may result in safety hazards from fires or explosions.<sup>4</sup> Proper waste management also supports better control of related greenhouse gas (GHG) emissions that contribute to climate change, by facilitating methane capture.

Project implementation will allow solid waste materials to be processed in a confined structure, preventing their release into the surrounding environment. The Project is expected to generate environmental and human health benefits related to the following Project outcomes.

- Improved landfill operations for the disposal of up to 55 metric tons of solid waste per day;
- Full compliance with applicable laws and regulations; and
- Improved solid waste management system for approximately 16,500 households.

There are environmental impacts associated with the daily operation of heavy equipment, such as the emission of dust, air pollutants and noise, for which mitigation measures are required.

---

<sup>4</sup> Source: U.S. Environmental Protection Agency (EPA), EPA530-F-02-026a (5306W) Solid Waste and Emergency Response, May 2002 ([www.epa.gov/globalwarming](http://www.epa.gov/globalwarming)).

However, when vehicles are operated and maintained properly, the environmental benefits of the Project outweigh the potential negative impacts, which in the long run are expected to be minimal when compared to the positive environmental impact of improving solid waste management and reducing soil and air contamination and risks to human health. Therefore, the environmental impacts resulting from Project implementation will be positive overall.

N A A A

Equipment warranties and specifications call for regular maintenance to prolong the useful life and efficiency of the equipment. Specific instruction on how to mitigate the risks related to the operation of the equipment was included as part of the training provided by the consultant. A maintenance service contract will also be acquired with the equipment to ensure the establishment of proper maintenance practices.

Moreover, the equipment purchased through the Project will be used to carry out activities that are inherently mitigation measures in and of themselves, as required by the solid waste management regulations. Specific mitigation measures using the new equipment are referenced in the landfill O&M manual, including: maintenance and repairs to access ways, cells and terminated areas; dust control; and capture of biogas and leachates.

Project implementation will have no significant adverse impacts on the environment. The use of best management practices and compliance with local ordinances will address any potential temporary and minor adverse impacts.

A A w A

The Project contributes to the reduction of environmental degradation by improving solid waste management in the area. Solid waste will be collected and conveyed to a new landfill, where it will be properly and efficiently confined to reduce the risk of soil and water contamination and health hazards resulting from inadequately confined waste material. Additionally, the implementation of new operation practices identified during the planning and training phase support efficient use of the land by minimizing the space required for waste confinement in the landfill.

A w A

The no-action alternative was not considered viable, since the community does not have the equipment necessary for the adequate confinement of waste, which could shorten the life of the landfill, prolong the use of improper practices for waste containment and generate significant health and safety hazards for the public. The new equipment will eliminate inadequate waste confinement practices, preventing the impacts associated with air quality and public health.

**Existing Conditions and Project Impact – Health**

The inadequate management of solid waste produces multiple negative impacts on human health and the environment. Even with the lack of epidemiological studies corroborating a direct link, it is widely recognized that agents exist in garbage that affect human health. Uncollected or



inadequately confined waste can cause an increase in the number of registered cases of diseases such as: dengue, leptospirosis, gastrointestinal problems, breathing problems, skin infections and other problems that are worsened when the population lacks basic sanitary services. These same conditions may provoke frequent diarrhea that can lead to episodes of childhood malnutrition.

Project implementation is expected to help reduce the health risks associated with inadequately confined solid waste by reducing the possibility of human exposure to decaying garbage, as well as eliminating the breeding grounds for disease-carrying vectors, such as flies and mosquitos. Table 3 shows the health statistics in 2010 for the state of Chihuahua.

**Table 3**  
**2010 CHIHUAHUA STATE HEALTH STATISTICS**

	Disease	Total	%
1	Acute respiratory infections	940,717	60.4
2	Intestinal infections by other organisms and poorly defined	205,126	13.2
3	Urinary tract infections	146,829	9.4
4	ulcers, gastritis and duodenal	53,376	3.4
5	Arterial Hypertension	31,626	2.0
6	Gingivitis y periodontal disease	24,664	1.6
7	Diabetes mellitus non Insulin dependent (Type II)	19,032	1.2
8	Acute otitis media	18,883	1.2
9	Asthma and status asthmaticus	16,475	1.1
10	Chicken pox	10,631	0.7
11	Pneumonia and bronchopneumonia	8,984	0.6
12	Intestinal amebiasis	6,701	0.4
	<b>Total</b>	<b>1,558,606</b>	<b>100.0</b>

Source: Mexican Ministry of Health, Center for Disease Control ( n A A AV A n ).

**Transboundary Effects**

Transboundary environmental impacts are not anticipated since the location of the landfill is not adjacent to the United States. However, indirect benefits are expected in the region due to the reduction of transmissible diseases related to the inadequate disposal of solid waste in the area.

**Other Local Benefits**

Equipment acquisition and training strengthen the institutional capacity of the Municipality and promote sustainable development within the community, which will improve the quality of life of the community at large.

**2.3. FINANCIAL CRITERIA**

**2.3.1. Uses and Sources of Funds**

The total estimated cost of the Project is US\$500,000, including the cost of the equipment, a service agreement and value-added tax. The Project Sponsor requested a US\$500,000 grant from NADB through its Community Assistance Program (CAP) to cover the financing of the Project. Table 4 presents a summary of total Project costs and the funding.

**Table 4**  
**PROJECT COSTS AND SOURCES OF FUNDS**

Uses	Amount (USD)	Amount (MXP)	%
Equipment*	\$500,000	\$8,000,000	100.0
<b>TOTAL</b>	<b>\$500,000</b>	<b>\$8,000,000</b>	<b>100.0</b>
Sources	Amount (US\$)	Amount (MX pesos)	%
NADB CAP Grant	\$500,000	\$8,000,000	100.0
<b>TOTAL</b>	<b>\$500,000</b>	<b>\$8,000,000</b>	<b>100.0</b>

\*Includes the service agreement and value-added tax (VAT).

The Project Sponsor has agreed to cover any cost in excess of the proposed grant amount in order to complete the Project.

### 2.3.2. Program Criteria Compliance

The proposed Project complies with all CAP criteria. It is located within the U.S.-Mexico border region served by BECC and NADB, is being sponsored by a public sector entity and is in an environmental sector eligible for NADB financing. Additionally, as a solid waste project, it is considered a priority under the CAP program.

As explained previously, the Project complements a landfill construction project funded jointly by the Municipality and the Mexican federal government, as the equipment purchased under the Project will be used to operate the landfill. SEMARNAT invested \$4,676,089.72 pesos (US\$292,255) in the landfill, according to official letter No. DGFAUT/612/000520 dated May 13, 2015, and the Municipality invested more than \$1 million pesos (\$62,500), which serves to meet the minimum sponsor contribution required under the CAP program.

Finally, there are no permits or authorizations required for the implementation of the Project. Construction of the new landfill is scheduled to be complete in June 2016, and the Project Sponsor is ready to initiate bidding for equipment acquisition once funding has been approved.

### 2.3.3. Conclusion

For the above reasons, NADB proposes providing a CAP grant for up to US\$500,000 to the Municipality of Nuevo Casas Grandes, Chihuahua, for the Project.

---

### 3. PUBLIC ACCESS TO INFORMATION

---

#### 3.1. PUBLIC CONSULTATION

BECC published the draft certification and financing proposal for a 14-day public comment period beginning May 3, 2016. The following Project documentation was made available upon request:

- Resolution of the initial study for the construction of the landfill ( *A A n A w w* )
- Operations and Maintenance Manual

The public comment period ended on May 17, 2016, with no comments received.

#### 3.2. OUTREACH ACTIVITIES

The Project is not required to conduct any public outreach activities pursuant to legal, regulatory or funding requirements. Since the Project does not require any environmental permits, no official notice was published in the local media.

BECC conducted a media search to identify potential public input or opposition to the Project. Articles found that are related to solid waste management in Nuevo Casas Grandes include:

- *A* (August 24, 2014) *AC A A A A A A A A*  
(Mayor seeks BECC support for sanitary landfill)  
<http://www.akronoticias.com/2014/08/9827-29434.htm> *A*
- *A A A* (June 24, 2015) “ *AA A A A A*  
*A A c* ” (Waste management training provided to 20 municipalities)  
<http://laopcion.com.mx/noticia/97922>.
- *A* (July 8, 2015) “ *A A A A A A A*  
(BECC trains landfill operators) <http://www.akronoticias.com/2015/07/9808-42380.htm> *A*

The information identified in the articles describes the efforts of the Municipality to acquire funds for the construction of the new sanitary landfill and for the procurement of equipment, as well as various training courses held on solid waste management. No opposition was detected in the media search for the Project.